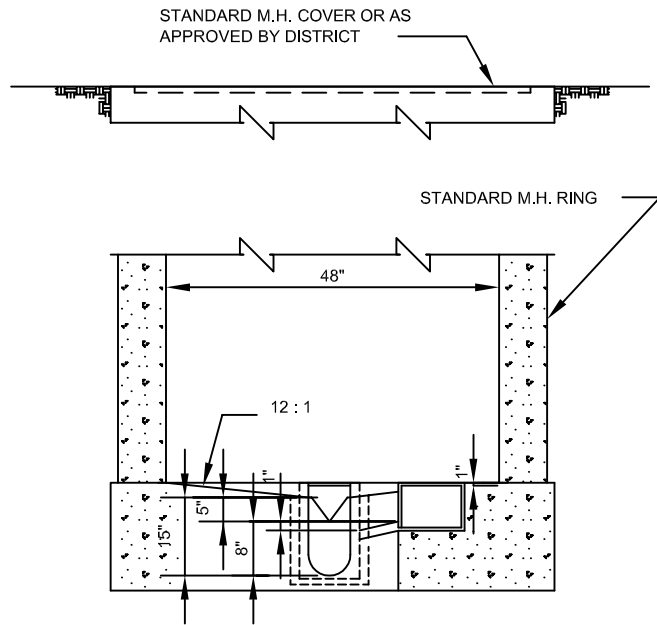
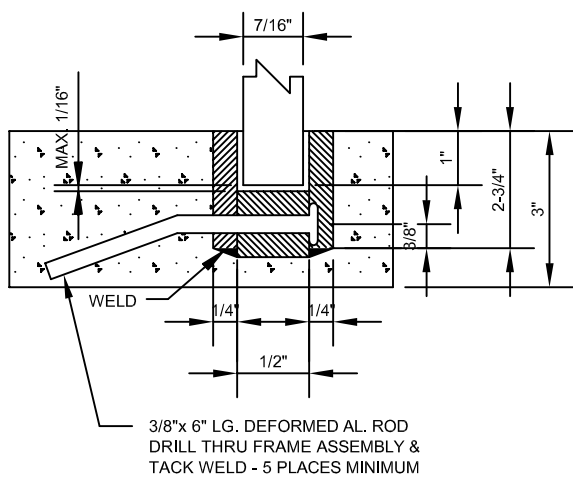


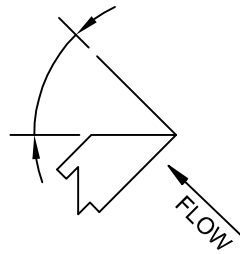
PLAN



SECTION

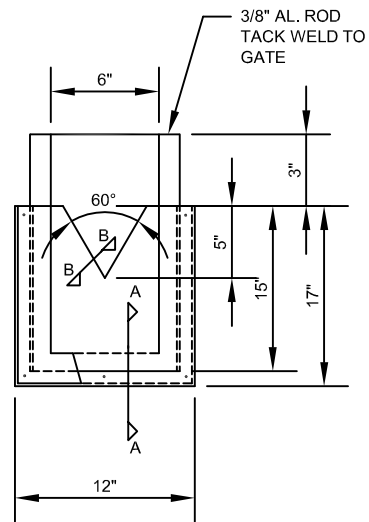


SECTION A-A



SECTION B-B

A RECORDER MAY REQUIRED TYPE AND MODEL PER DISTRICT



FRAME & GATE ASSEMBLY

NOTE: ALL MATERIAL FOR GATE AND FRAME TO BE ALUMINUM PLATE

NOTES:

- 1) CONSTRUCT CONTROL MANHOLE ON STRAIGHT RUN OF SEWER PIPE. FLOW SHALL BE STRAIGHT THROUGH AS SHOWN.
- 2) BOTTOM OF V-NOTCH MUST ALWAYS BE ABOVE MAXIMUM POSSIBLE LEVEL IN DOWNSTREAM CHANNEL TO PREVENT SUBMERGED DISCHARGE CONDITIONS.
- 3) THE CONTROL MANHOLE SHALL BE A MINIMUM SIZE OF 4 FOOT SQUARE INSIDE OR 4 FOOT INSIDE DIAMETER AND CONSTRUCTED OF CONCRETE BLOCK, BRICK, STANDARD MANHOLE RINGS OR POURED CONCRETE.
- 4) CONTROL MANHOLE PLANS ARE TO BE SUBMITTED TO THE ENGINEERING DEPARTMENT OF THE VALLECITOS WATER DISTRICT FOR APPROVAL.
- 5) FOR 6" OR 8" LINES ONLY.
- 6) FOR FLOWS OF 10,000 TO 100,000 PER DAY. FOR FLOWS OTHER THAN THOSE SPECIFIED, CONTACT THE DISTRICT.

REVISIONS			VALLECITOS WATER DISTRICT STANDARD DRAWING	DATE: JAN. 04
DESCRIPTION	APPROVED	DATE		BY:
DELETE STEPS / REV. MISC. NOTES		8-21-07	INDUSTRIAL WASTE CONTROL MANHOLE	Drawing No.
				S-13