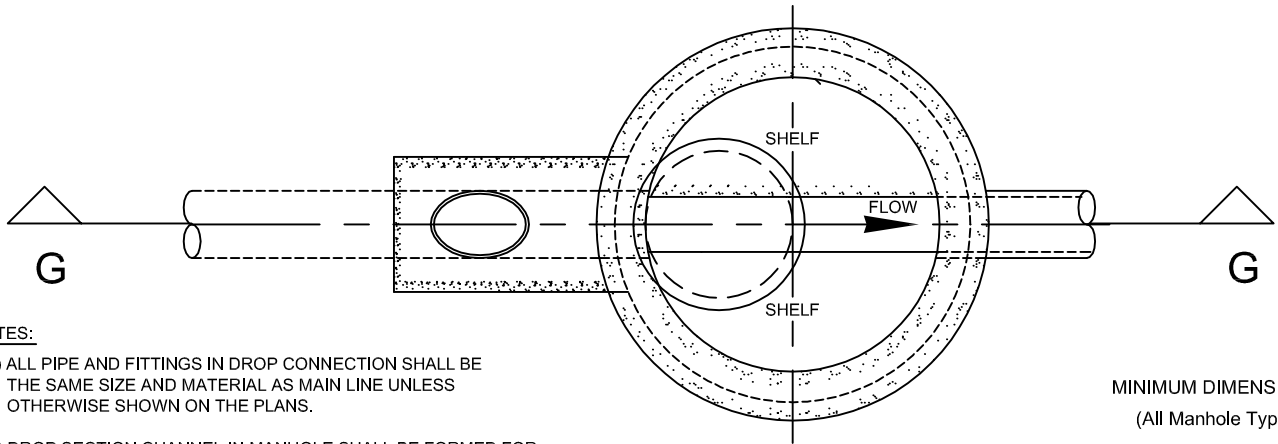


SECTION G-G

PVC SEWER MAIN CONNECTION AT MANHOLE SHALL BE SAND COLLAR WATER STOP FITTING.



SECTION H-H

NOTES:

- 1) ALL PIPE AND FITTINGS IN DROP CONNECTION SHALL BE THE SAME SIZE AND MATERIAL AS MAIN LINE UNLESS OTHERWISE SHOWN ON THE PLANS.
- 2) DROP SECTION CHANNEL IN MANHOLE SHALL BE FORMED FOR 8" DIAMETER PIPE UNLESS OTHERWISE SHOWN ON PLANS.
- 3) CHANNEL INVERTS SHALL BE TRUE TO GRADES AND ALIGNMENT AND FINISHED SMOOTH.
- 4) IF DISTANCE 'C' IS GREATER THAN 4'-0" USE MANHOLE TYPE 'A'.
- 5) SHEAR COUPLINGS ARE REQUIRED WHEN BELLED ENDS ARE NOT USED.
- 6) BITSUMASTIC SHALL BE USED ON ALL MANHOLE JOINTS, EXCLUDING GRADE RINGS.

MINIMUM DIMENSIONS:
(All Manhole Types)

'D'	'F'	'G'
6" to 8"	6"	4"
10" to 15"	6"	4"
18" to 27"	12"	4"

DIMENSIONS 'F' & 'G' SHALL BE USED FOR 'D' (INSIDE DIA. OF PIPE) OF THE LARGEST PIPE IN THE MANHOLE.

TYPE "B" DROP MANHOLE TO BE USED ONLY UPON APPROVAL OF DISTRICT ENGINEER.

REVISIONS			VALLECITOS WATER DISTRICT STANDARD DRAWING	DATE: JAN. 04
DESCRIPTION	APPROVED	DATE		DROP MANHOLE TYPE "B"
REMOVE STEPS & REVISE "F" & "G"		7-24-07	Drawing No.	
ROTATED SECTION		10-27-11	S-3	