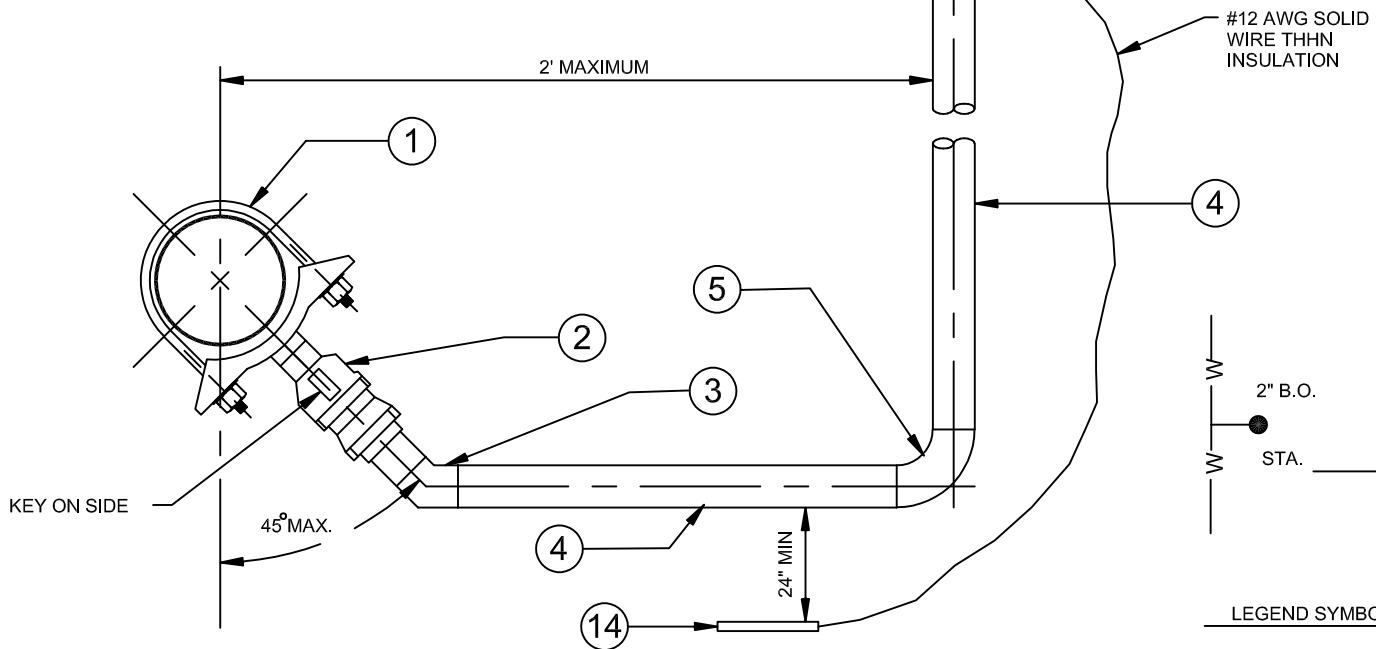
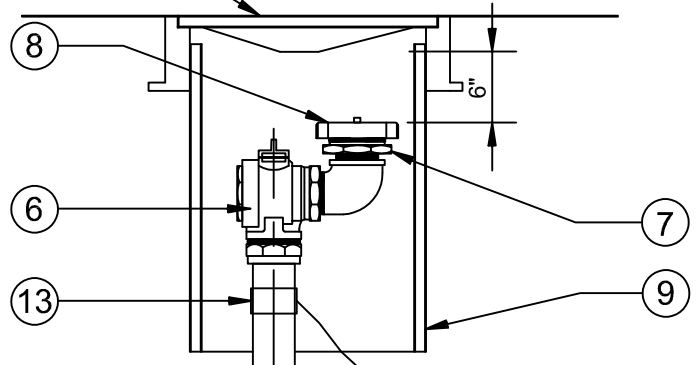
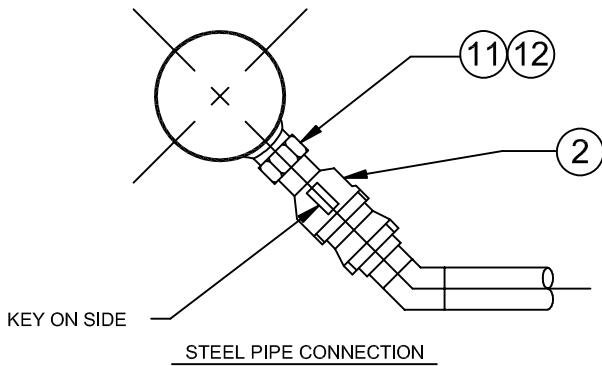
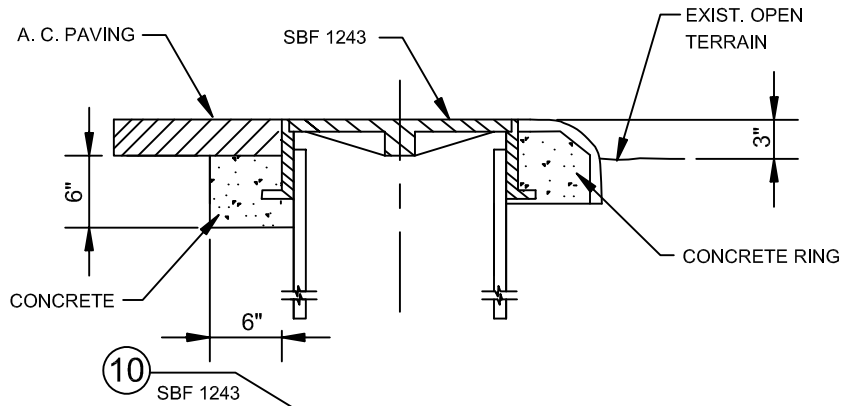


NOTES:

- 1) BLOW-OFF SHALL BE LOCATED TO THE SIDE OF THE STREET NEAREST GUTTER/EDGE.
- 2) ALL JOINTS TO BE 15% SILVER SOLDERED.



ITEM	MATERIAL	ITEM	MATERIAL
(1)	SADDLE	(9)	12" OD X 24" SDR-41 CASING, WHITE
(2)	BALL CORP STOP	(10)	FRAME AND COVER
(3)	2" COPPER 45° ELBOW	(11)	3000# FORGED STEEL HALF COUPLING (ON STEEL PIPE ONLY)
(4)	2" TYPE K SOFT COPPER TUBING	(12)	DIELECTRIC INSULATING BUSHING (ON STEEL ONLY)
(5)	2" COPPER 90° ELBOW	(13)	MECHANICAL GROUNDING CLAMP PER CURRENT VWD MAT. LIST
(6)	NL BALL VALVE McDONALD 76109BCAPQ 2	(14)	ZINC ANODE PER CURRENT VWD MATERIAL LIST
(7)	2" X 2 1/2" FIPT X MHT ADAPTER		
(8)	2 1/2" HOSE CAP W/ CHAIN		

REVISIONS		
DESCRIPTION	APPROVED	DATE
ADDED NL BALL VALVE 74606BQ		9-8-16
ADDED ZINC ANODE & CLAMP		3-27-17
NEW BALL VALVE & REMOVE ELBOW		9-13-18

VALLECITOS WATER DISTRICT STANDARD DRAWING

2" BLOW-OFF ASSEMBLY

DATE: JULY 2015

BY: _____

Drawing No.

W-1