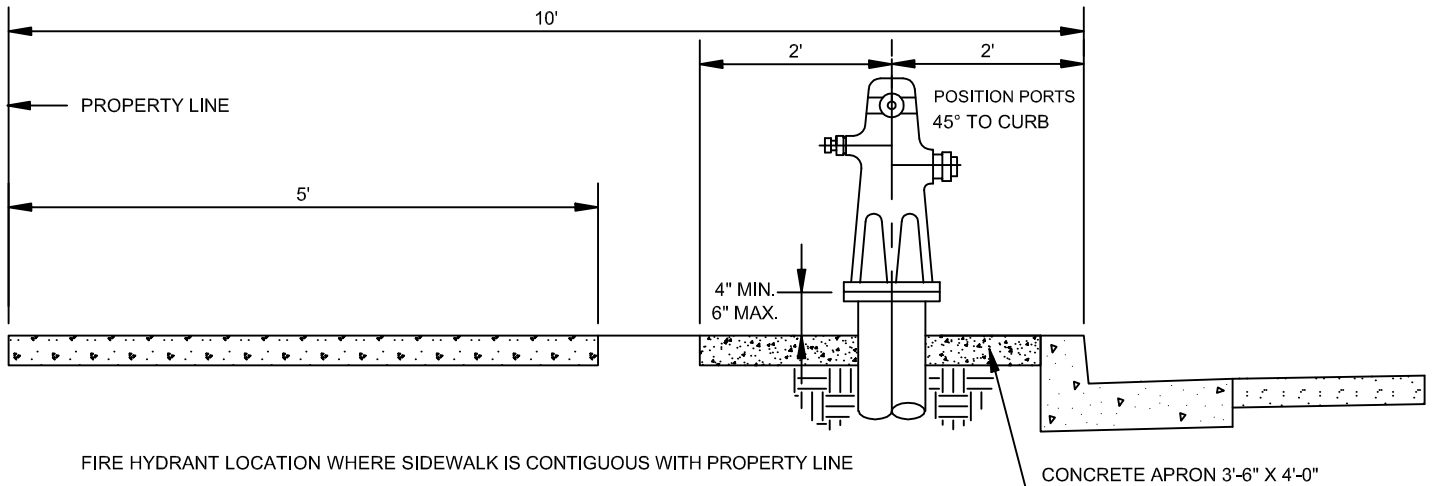
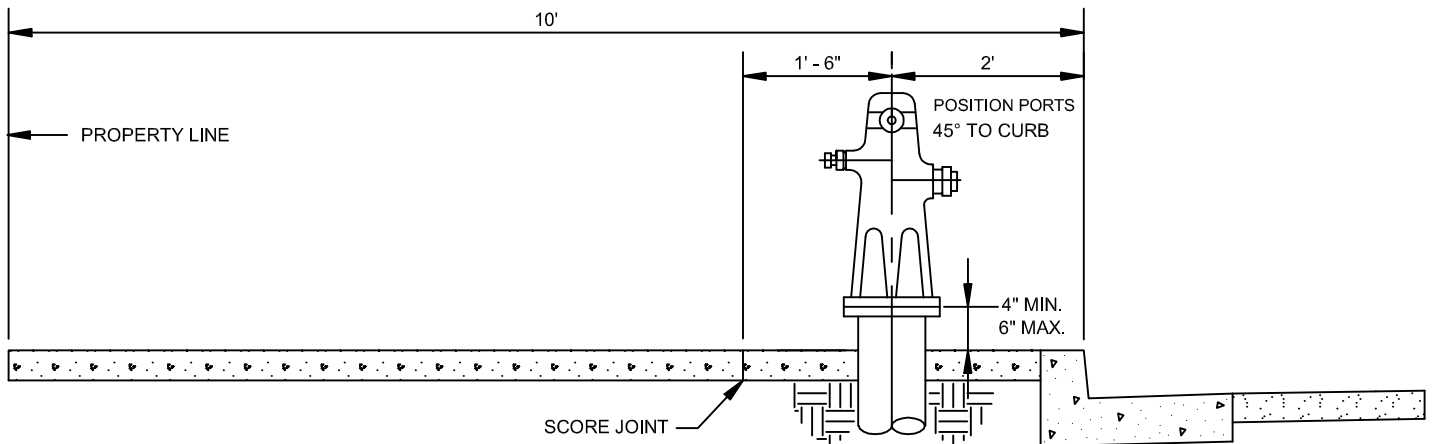


FIRE HYDRANT LOCATION WHERE SIDEWALK IS CONTIGUOUS WITH CURB



FIRE HYDRANT LOCATION WHERE SIDEWALK IS CONTIGUOUS WITH PROPERTY LINE



FIRE HYDRANT LOCATION WHERE SIDEWALK OCCUPIES FULL WIDTH OF PARKWAY STRIP

NOTE: A 10' MIN. HORIZONTAL OFFSET FROM EDGE OF DRIVEWAY ENTRANCES IS REQUIRED

| REVISIONS | | | VALLECITOS WATER DISTRICT STANDARD DRAWING | DATE: JAN. 04 |
|----------------------------|----------|---------|--|---------------|
| DESCRIPTION | APPROVED | DATE | | BY: |
| POSITION PORTS 45° TO CURB | | 7-17-07 | STANDARD FIRE HYDRANT LOCATIONS WHERE CURBS ARE INSTALLED | Drawing No. |
| | | | | W-5 |
| | | | | |
| | | | | |