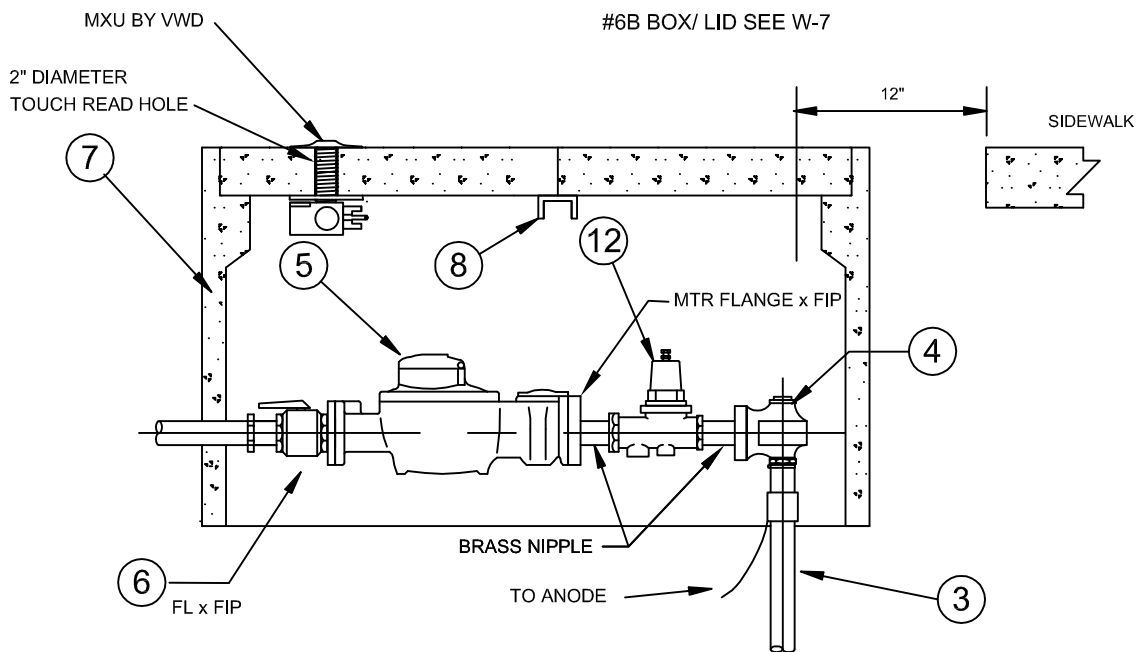


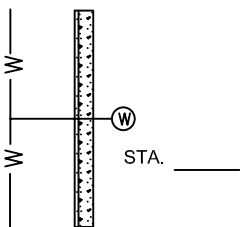
3/4" THROUGH 1" METER W/ REGULATOR,
#6B BOX/ LID SEE W-7



1 1/2" & 2" METER W/ REGULATOR,
ARMORCAST A6001430PCX18
TWO - PIECE LID
OR APPROVED EQUAL

NOTES:

- 1) METER SET AND BOX TO BE PLACED BEHIND CURB AND/OR SIDEWALK. IN NO CASE SHALL THE BOX BE PLACED IN THE SIDEWALK WITHOUT DISTRICT PERMISSION.
- 2) TO PROTECT THE DISTRICT METER, A PRESSURE REGULATOR IS REQUIRED FOR PRESSURES GREATER THAN 175 PSI.
- 3) NO JOINTS ALLOWED



LEGEND SYMBOL

ITEM	MATERIAL	ITEM	MATERIAL
(1)	SEE W - 6, W - 7	(7)	POLYMER CONCRETE METER BOX W/ LID
(2)	SEE W - 6, W - 7	(8)	STEEL SUPPORT BEAM
(3)	TYPE "K" SOFT COPPER TUBING, PER APP'D SIZE	(9)	
(4)	BALL ANGLE METER STOP FIP X FIP	(10)	
(5)	WATER METER	(11)	PIPE CLAMP W/ LUG, COVERED W/ DIELECTRIC COATING
(6)	BALL VALVE W/ HANDLE	(12)	PRESSURE REGULATOR, SAME SIZE AS METER

REVISIONS		
DESCRIPTION	APPROVED	DATE
POLYMER CONCRETE BOX/ LID		2-16-12
ADDED 150 PSI TO TITLE		3-27-17
CHANGED 150 PSI TO 175 PSI		2-27-18
CHANGED ANGLE METER STOP		4-3-18

VALLECITOS WATER DISTRICT STANDARD DRAWING

HIGH PRESSURE (175 PSI+)
WATER METER CONNECTION
(3/4" THROUGH 2" METERS)

DATE: JULY 2015

BY:

Drawing No.

W-8