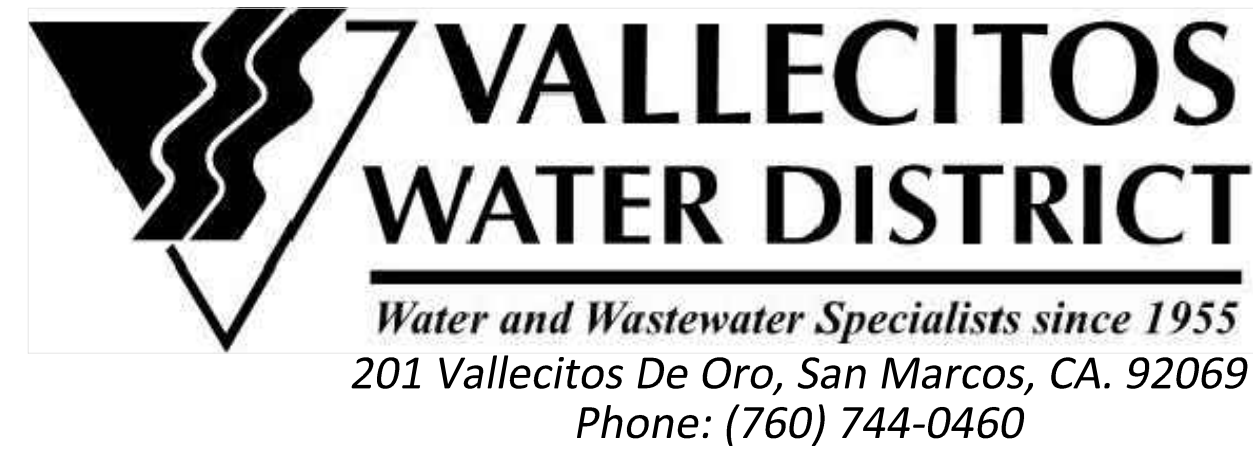


ROCK SPRINGS VALVE REPLACEMENT PROJECT

ROCK SPRINGS RD & BENNETT AVE



SHEET INDEX	
1	TITLE SHEET, SHEET INDEX, VICINITY MAP & LOCATION MAP
2	NOTES, ABBREVIATIONS, LEGEND & MISC
3	WATER MAIN VALVE REPLACEMENT PLAN
4	WATER MAIN VALVE REPLACEMENT DETAILS

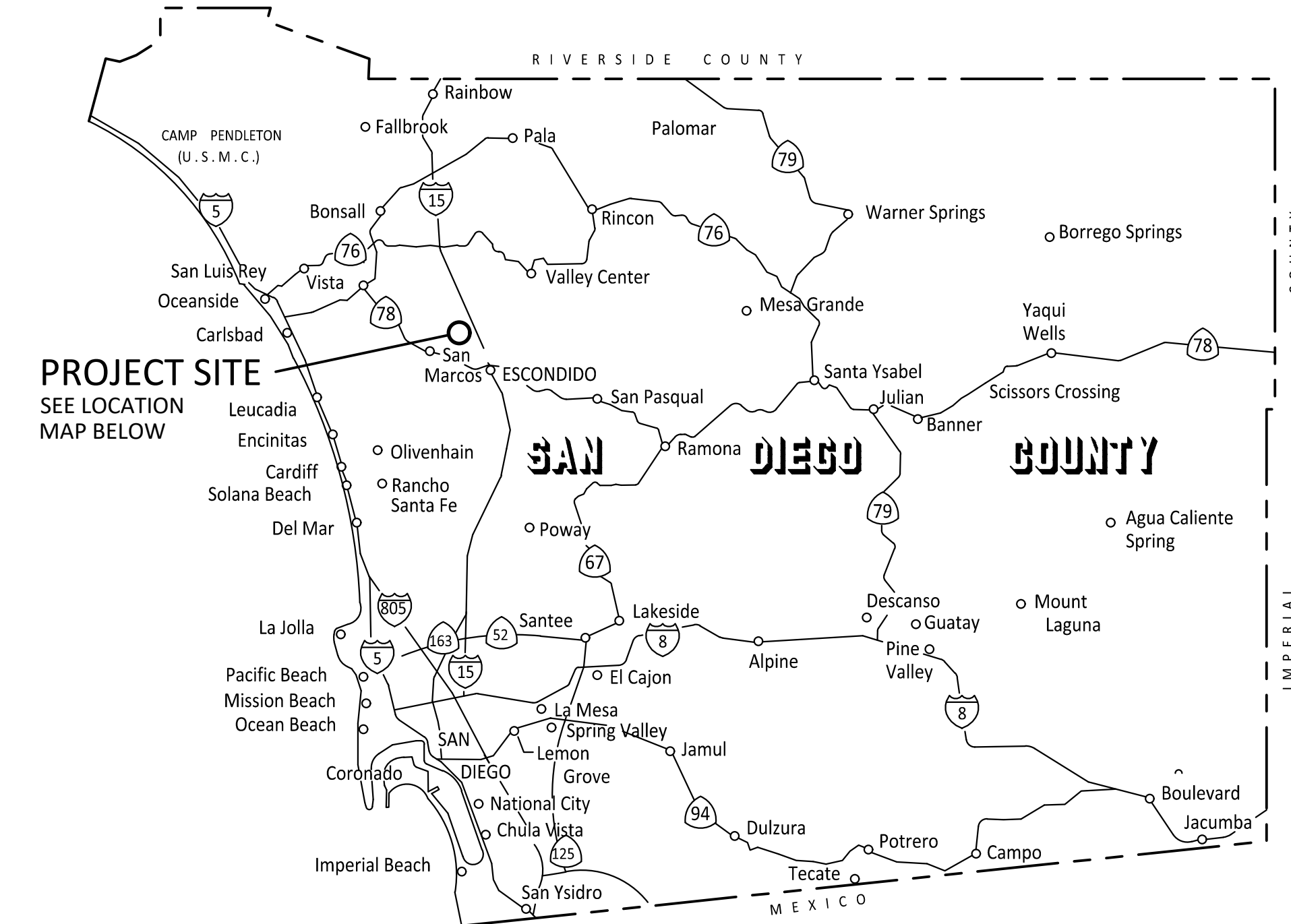
REFERENCE DRAWINGS	
1009-3	ROCK SPRINGS ROAD
1000-11	ROCK SPRINGS ROAD
1000-15	BENNETT AVE
1002-6	TRANSMISSION MAIN
1002-07	PRESSURE REDUCING STATION
1002-07A	INTERSECTION RD OF ROCK SPRINGS & BENNETT AVE (PRS)
1410	ESCONDIDO TRACT 545 STORM DRAIN - BENNETT AVE
1891	BENNETT AVE STREET IMPROVEMENTS
122022	GIS WATER MAP (EAST)
122022	GIS WATER MAP (WEST)
122022	GIS WATER MAP (CITY BOUNDARIES)
120325	SDG&E GAS ASSET MAP
16027-120325	SDG&E ELECTRIC ASSET MAP

JULY 2023

DECLARATION OF ENGINEER OF WORK

I HEREBY DECLARE THAT THE DESIGN OF THE IMPROVEMENTS AS SHOWN ON THESE PLANS COMPLIES WITH PROFESSIONAL ENGINEERING STANDARDS AND PRACTICES. AS THE ENGINEER IN RESPONSIBLE CHARGE OF THE DESIGN OF THESE IMPROVEMENTS, I ASSUME FULL RESPONSIBLE CHARGE FOR SUCH DESIGN. I UNDERSTAND AND ACKNOWLEDGE THAT THE SIGNATURE OF THESE PLANS BY VALLECITOS WATER DISTRICT, IS A REVIEW OF GENERAL COMPLIANCE WITH DISTRICT STANDARDS. THIS APPROVAL IS NOT A DETERMINATION OF THE TECHNICAL ADEQUACY OR ACCURACY OF THE DESIGN OF THE IMPROVEMENTS. SUCH APPROVAL DOES NOT, THEREFORE, RELIEVE ME OF MY RESPONSIBILITY FOR THE DESIGN OF THESE IMPROVEMENTS.

FIRM: HOCH CONSULTING
 ADDRESS: 804 PIER VIEW WAY - SUITE 100
 CITY, ST.: OCEANSIDE, CALIFORNIA 92054
 TELEPHONE: 858-431-9767
 BY: ADAM HOCH, PE DATE: 7/28/2023
 RCE NO.: C77635
 REGISTRATION EXPIRATION DATE: 06-30-25

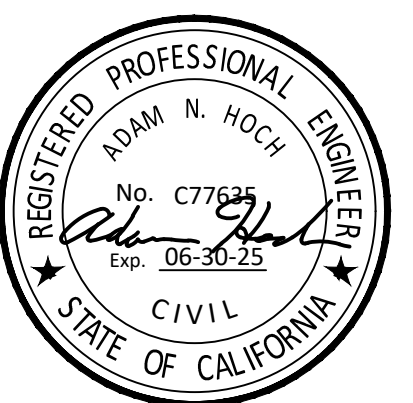


VICINITY MAP
NO SCALE

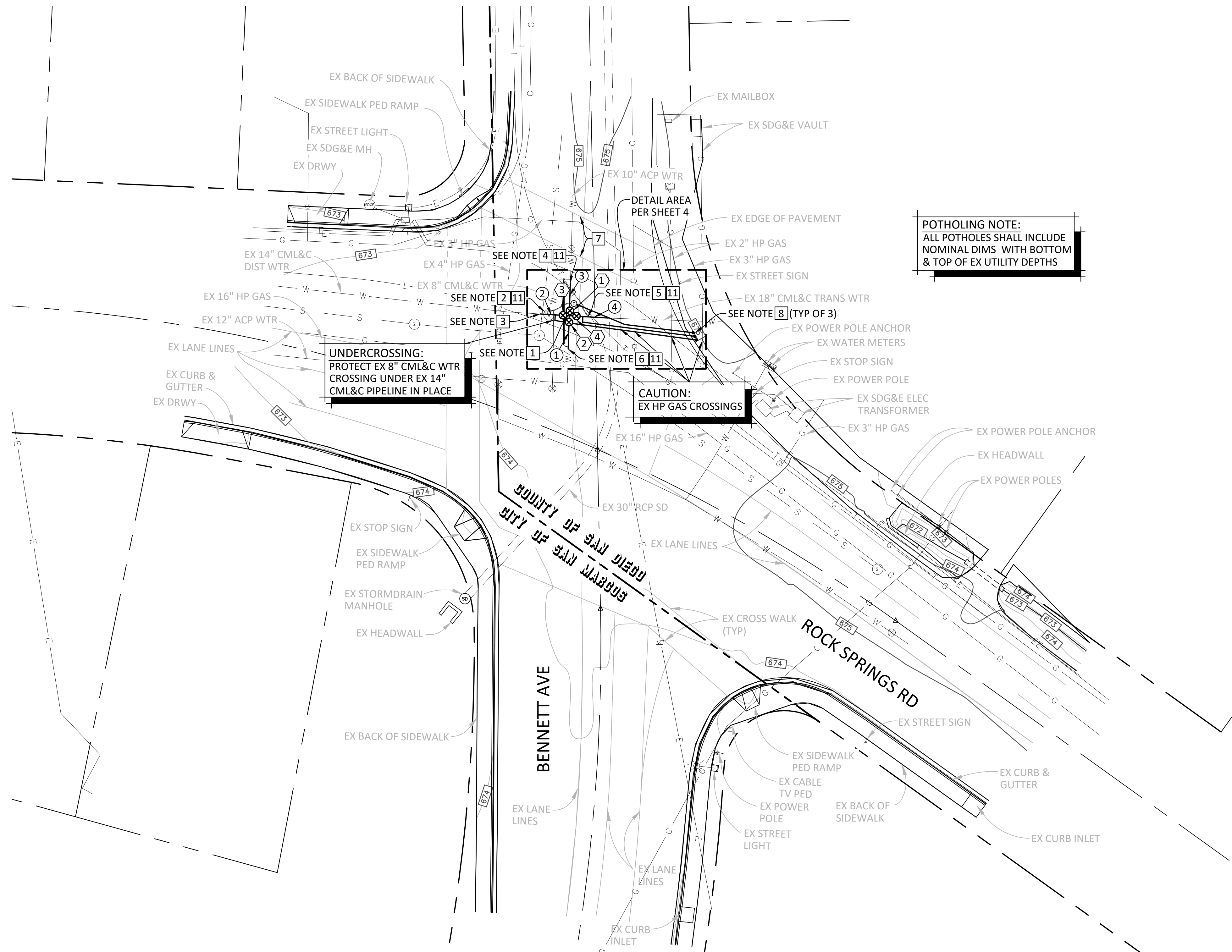


LOCATION MAP
1" = 300'

VWD AS-BUILT	
BY: _____	DATE _____
NAME (ENGINEER OF WORK)	
R.C.E. NO.	
VALLECITOS WATER DISTRICT	
PRESSURE ZONE: _____	920 HGL
PUMP ZONE:	



NO.	DESCRIPTION	DATE	APPROVED	DESIGNED BY:	RECOMMENDED BY:	DATE	HOCH CONSULTING	ROCK SPRINGS VALVE REPLACEMENT PROJECT	SHEET NO:
				RR	JASON HUBBARD, P.E.	10-23-24	804 PIER VIEW WAY - SUITE 100 OCEANSIDE, CA 92054 www.hochconsulting.com	TITLE SHEET, SHEET INDEX, VICINITY MAP & LOCATION MAP	1 OF 4
				AS-BUILT BY:					WORK ORDER: 258305
				CHECKED BY:					
				AR/AH					



POTHOLING NOTE:
ALL POTHOLES SHALL INCLUDE NOMINAL DIMS WITH BOTTOM & TOP OF EX UTILITY DEPTHS

UNDERCROSSING:
PROTECT EX 8" CML&C WTR CROSSING UNDER EX 14" CML&C PIPELINE IN PLACE

CAUTION:
EX HP GAS CROSSINGS

CONSTRUCTION NOTES:

- 1 REMOVE & DISPOSE EX CML&C STL 18" x 10" CROSS & 18" x 14" STL REDUCER. INSTALL NEW 18" x 10" CROSS, 1- 18" GATE VALVE, 2- 10" GATE VALVES, 1- 18" x 14" REDUCER & 1- 14" GATE VALVE, SEE SHEET 4.
- 2 REMOVE & DISPOSE EX 14" PLUG VALVE, WATER MANHOLE W/ FRAME & COVER, 1" CORP STOP ASSY, 4" BLOW-OFF, GATE VALVE & 14" CML&C PIPELINE FROM EX CML&C STL REDUCER TO HORIZ ANGLE POINT BUTT-STRAP CONNECTION. SEE SHEET 4.
- 3 CONNECT 14" CML&C STL WTR FROM NEW 18" x 14" REDUCER TO EX 14" CML&C PIPELINE AFTER EX BUTT-STRAP IS REMOVED. INSTALL 4" BO ASSY PER VWD STD DWG W-23 AND STD SPEC 15076, SEE SHEET 4.
- 4 REMOVE & DISPOSE 8 LF OF EX 10" CML&C WTR. CONNECT 10" PVC DR14 TO EX 10" x 8" TEE. INSTALL 4" BO ASSY PER VWD STD DWG W-23 AND STD SPEC 15064. SEE SHEET 4.
- 5 REMOVE & DISPOSE 10 LF± OF EX 18" CML&C STL WTR & BLOW-OFF ASSY. INSTALL NEW 18" CML&C STL WTR CONNECTION TO EX 18" CML&C PIPELINE & 4" BLOW-OFF ASSY PER VWD STD DWG W-23 AND STD SPEC 15076.
- 6 REMOVE & DISPOSE 8 LF OF EX 10" CML&C WTR. CONNECT 10" PVC DR 14 TO EX 10" CML&C PIPELINE. SEE SHEET 4.
- 7 CONTRACTOR SHALL REPLACE IN-KIND ALL EX SIGNING, STRIPING & LETTERING AND MONUMENTS DAMAGED BY CONSTRUCTION ACTIVITIES PER AGENCY WITH JURISDICTION STANDARDS.
- 8 PLACEMENT OF BLOW-OFF RISER AND ELBOW OUTLETS SHALL BE DETERMINED BY A DISTRICT REPRESENTATIVE IN THE FIELD.
- 9 TRENCH COMPACTION & BACKFILL PER VWD STD DWG W-17.
- 10 TRENCH RESURFACING PER SDRSD G-24A & G-24B. SEE SHEET 4.
- 11 SEE IMPROVEMENT PLAN DETAIL SHEET 4 FOR CATHODIC PROTECTION REQUIREMENTS.

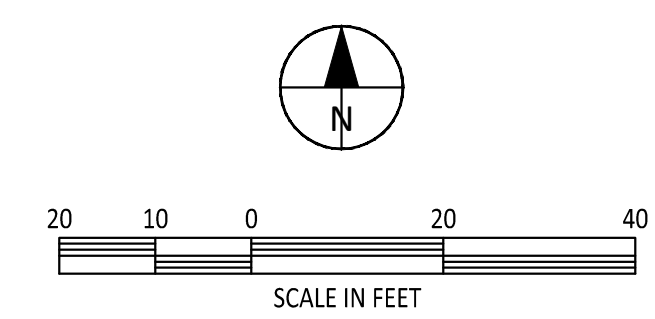
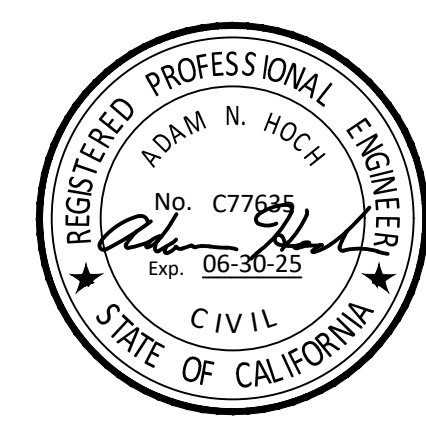
WATER VALVE REPLACEMENT SCHEDULE						
NO.	EXISTING		PROPOSED			COMMENTS
	SIZE	TYPE	SIZE	TYPE	CLASS	
1	10"	GATE	10"	GATE	150	SPEC 15102/STD DWG W-16
2	10"	GATE	10"	GATE	150	SPEC 15102/STD DWG W-16
3	14"	PLUG	14"	GATE	150	SPEC 15102/STD DWG W-16
4	-	-	18"	GATE	150	SPEC 15102/STD DWG W-16

*MANUFACTURING DATE MUST BE WITHIN 1 YEAR OF INSTALL

WATERLINE ALIGNMENT TABLE				
NO.	BEARING/DELTA	RADIUS	LENGTH	REMARKS
1	N 04°17'26" E	-	8.00**	10" PVC (DR14) PER SPEC 15064
2	N 85°42'34" W	-	6.00**	14" CML&C STL** PER SPEC 15076
3	N 04°17'26" E	-	8.00**	10" PVC (DR14) PER SPEC 15064
4	N 85°42'34" E	-	4.00'	18" CML&C STL** PER SPEC 15076

**PIPE LENGTHS DETERMINED PER VWD AS-BUILT DWG 1009-03
**STANDARD WEIGHT STEEL PIPE - 0.2500" MIN.THICKNESS

VALVE REPLACEMENT PLAN
SCALE 1" = 20'-0"



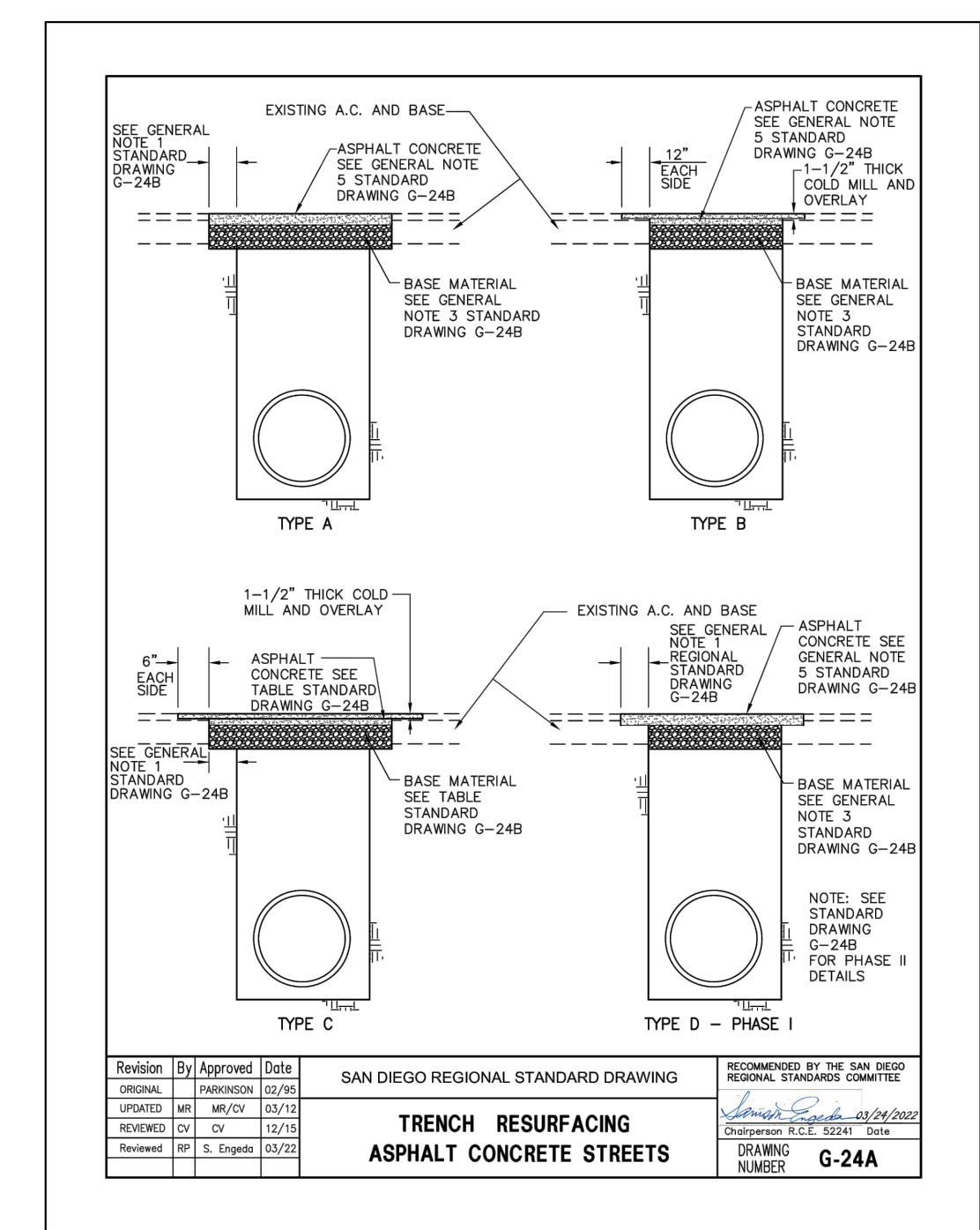
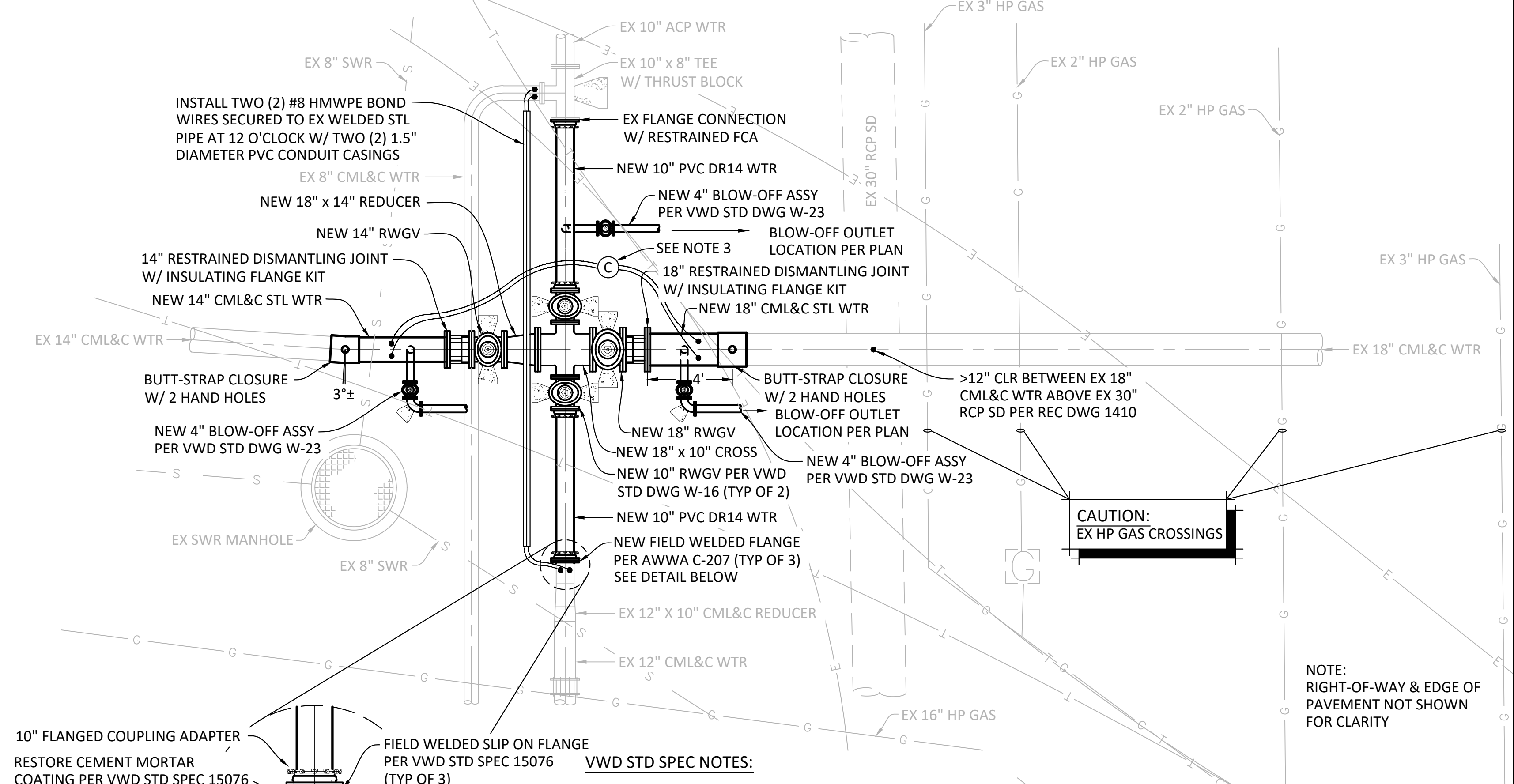
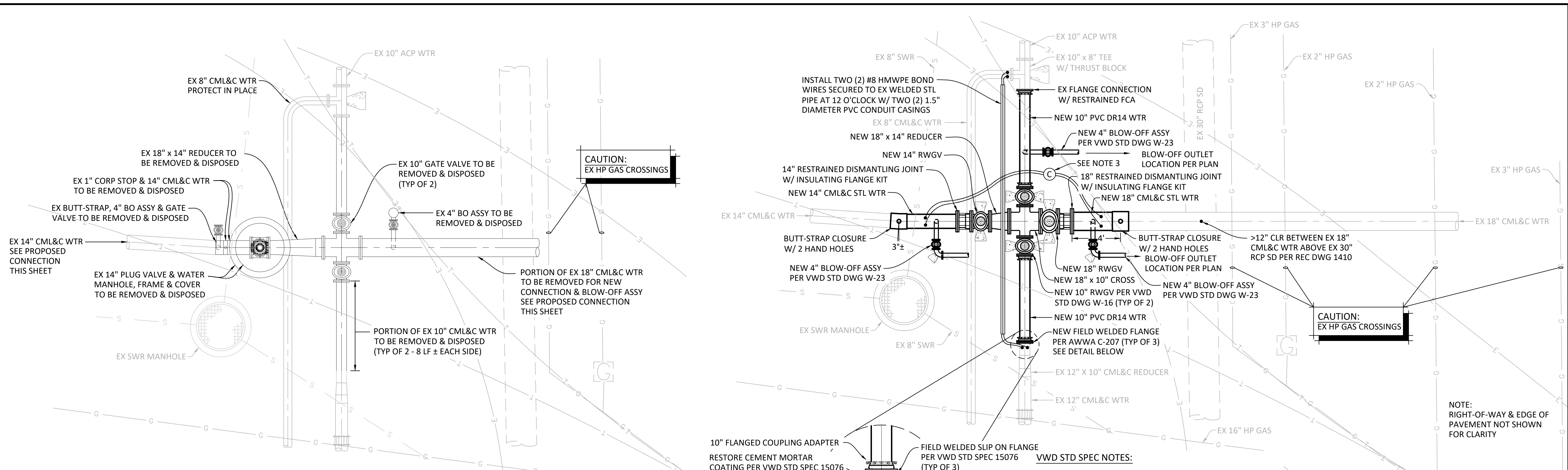
NO.	DESCRIPTION	DATE	APPROVED	DESIGNED BY:
				RR
				AS-BUILT BY:
				CHECKED BY:
				AR/AH

HOCH CONSULTING
804 PIER VIEW WAY - SUITE 100
OCEANSIDE, CA 92054
www.hochconsulting.com

ROCK SPRINGS VALVE REPLACEMENT PROJECT

WATER MAIN VALVE REPLACEMENT PLAN

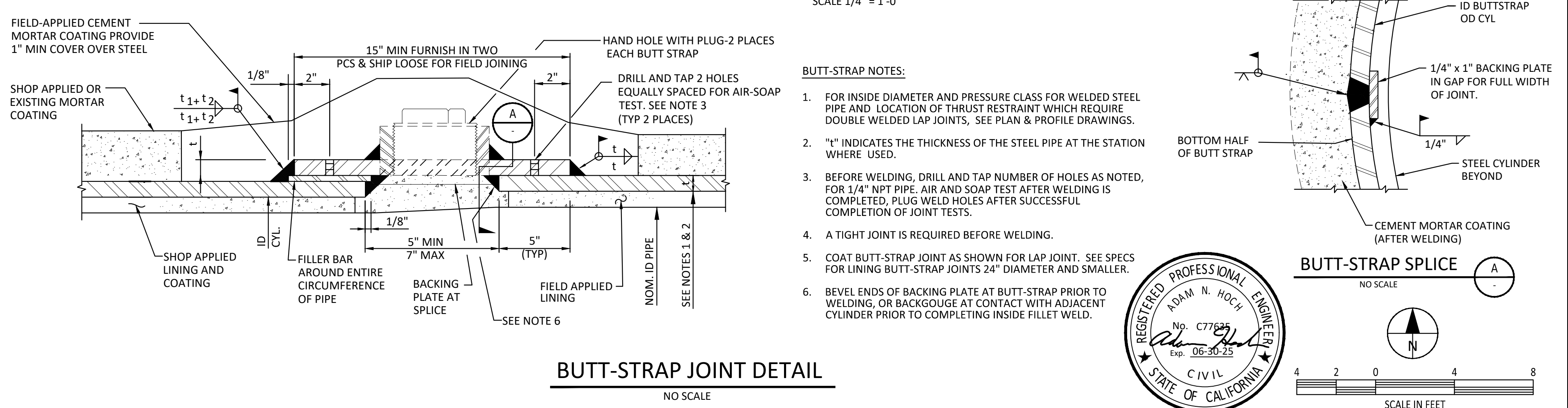
SHEET NO: 3 OF 4
WORK ORDER: 258305



TRENCH RESURFACING NOTES AND DETAILS
NO SCALE

TYPE C TRENCH	
MIX DESIGN	ASPHALT PLUS BASE
3/4" TYPE III CLASS B3	3/4" TYPE III CLASS B3 PLUS CLASS I BASE
ALLEYS - 8.0"	ASPHALT THICKNESS TO EQUAL EXISTING PLUS 1", MIN. 4" TO MAX. 9" COMBINED ASPHALT PLUS BASE 18" MIN.
LOCAL LANE COLLECTOR - 10.0"	
MAJOR OR GREATER - 12.0"	

REVISIONS:
 1. APPROVED: [Signature] DATE: 03/24/2022
 2. APPROVED: [Signature] DATE: 03/24/2022
 3. APPROVED: [Signature] DATE: 03/24/2022
 4. APPROVED: [Signature] DATE: 03/24/2022



NO.	DESCRIPTION	DATE	APPROVED	DESIGNED BY:
				RR
				AS-BUILT BY:
				CHECKED BY:
				AR/AH

HOCH CONSULTING
804 PIER VIEW WAY - SUITE 100
OCEANSIDE, CA 92054
www.hochconsulting.com

ROCK SPRINGS VALVE REPLACEMENT PROJECT

WATER MAIN VALVE REPLACEMENT DETAILS

SHEET NO: 4 OF 4
WORK ORDER: 258305

